

www.pooleharbourcanoecub.uk

www.phcc.org.uk

*

As with any website it isn't important to know all of the pages on the site - It is sufficient to be able to travel from one area to another - and this is managed by every page having a Generic Blue Tab Menu along the top edge.

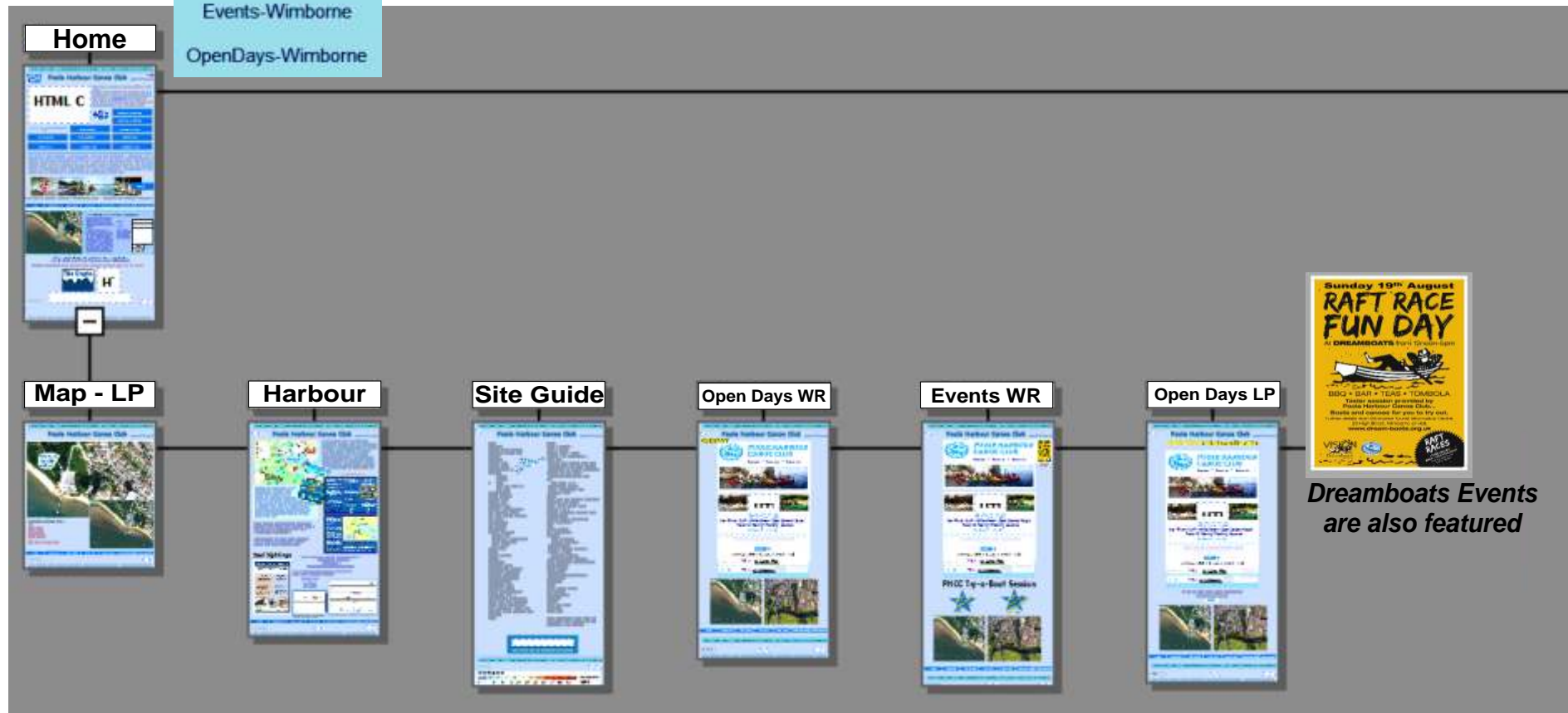
Each of the Sections visited by tapping a blue tab will show another 'drop-down' menu of the pages contained within that section - and once inside each section there is another sub menu to cover the pages within that area. It is therefore easy to move either within a sub-area or to return to the main topic tabs.

A 'Site Structure' page shows the topic areas and sub sections listed alphabetically on one single page - but on every page there is a 'Site-Search' button that allows text to be entered and a list returned containing that text (Google will often add extra results at the top but PHCC website pages containing the text entered will also be shown). A Search will not look inside the 'Members' Area'

Each page has a 'Question Mark' at the foot of the page linking to a reporting information page with an email address. Please use this if any errors are found - or contact direct using the 'Contacts' page of the website.

- Map-Club HQ
- The Harbour
- Site Guide
- Open Days - LP
- Events-Wimborne
- OpenDays-Wimborne

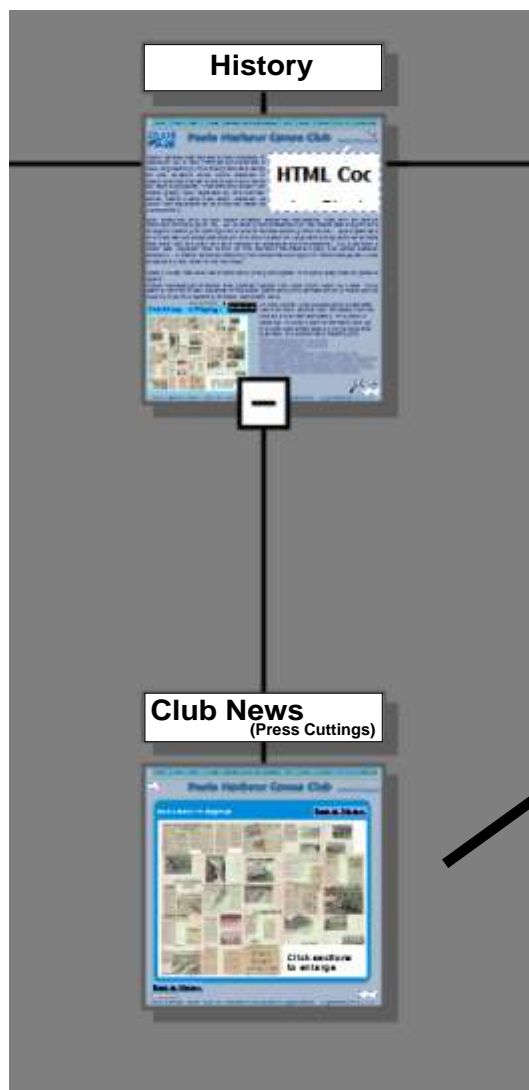
HOME > *The Harbour / Site Guide / Open Days LP / Open Days Riverside / Events*



Dreamboats Events are also featured

[Home](#)[History](#)[About](#)[E-Mag](#)[Members](#)[Activities](#)[Riverside](#)[Join](#)[Contact](#)[Training](#)[Flickr & fb](#)[Competitions](#)[Club News Cuttings](#)

HISTORY > *Press Cuttings* >>> 26 detailed press clippings of the clubs early years



Club History - in Clippings [Back to 'History'](#)

Click sections to enlarge

[Back to History](#)

Site Search

000319670

Poole Harbour Canoe Club is a Charitable Incorporated Organisation - Registration # 1152531 ?

[Home](#)[History](#)[About](#)[E-Mag](#)[Members](#)[Activities](#)[Riverside](#)[Join](#)[Contact](#)[Training](#)[Flickr & fb](#)[Competitions](#)[Club Nights](#)[Audio from H2O show - Solent
Radio](#)["Sunday Politics" Show](#)[CKMNC](#)[Paddlers-Against-Plastic-Waste](#)[Risk Assessments](#)

ABOUT > *Club Nights / Audi & Video Press / TV Press /
CKMNC Lin (Videos) / PAPW (Plastic Waste action record*

About

(General Info)



Club Nights

(Times & Places)



Audio (H₂O)

(Radio Solent)



Video - TV

(Sunday Politics)



CKMNC

(Info & Videos)



Risk Assessments

(under development)



PAPW

(Facebook Page Feed)

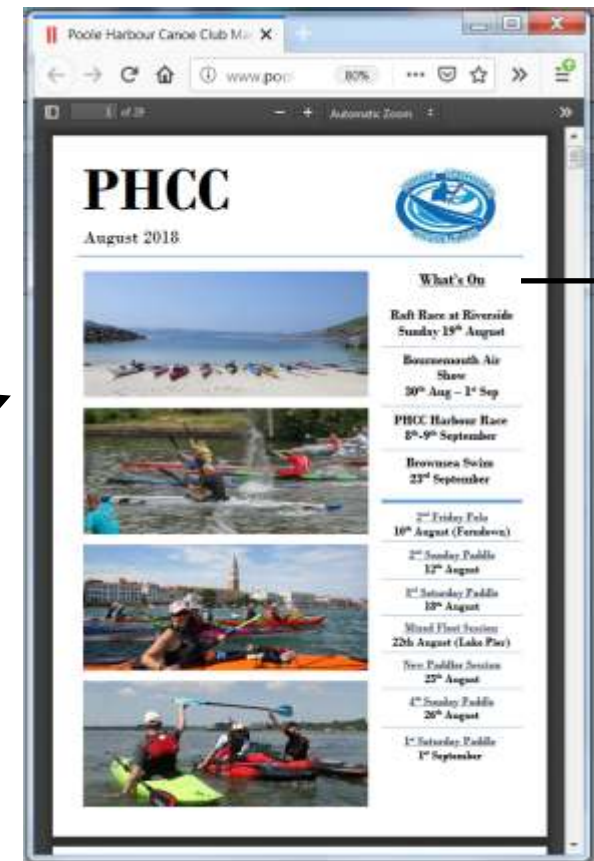
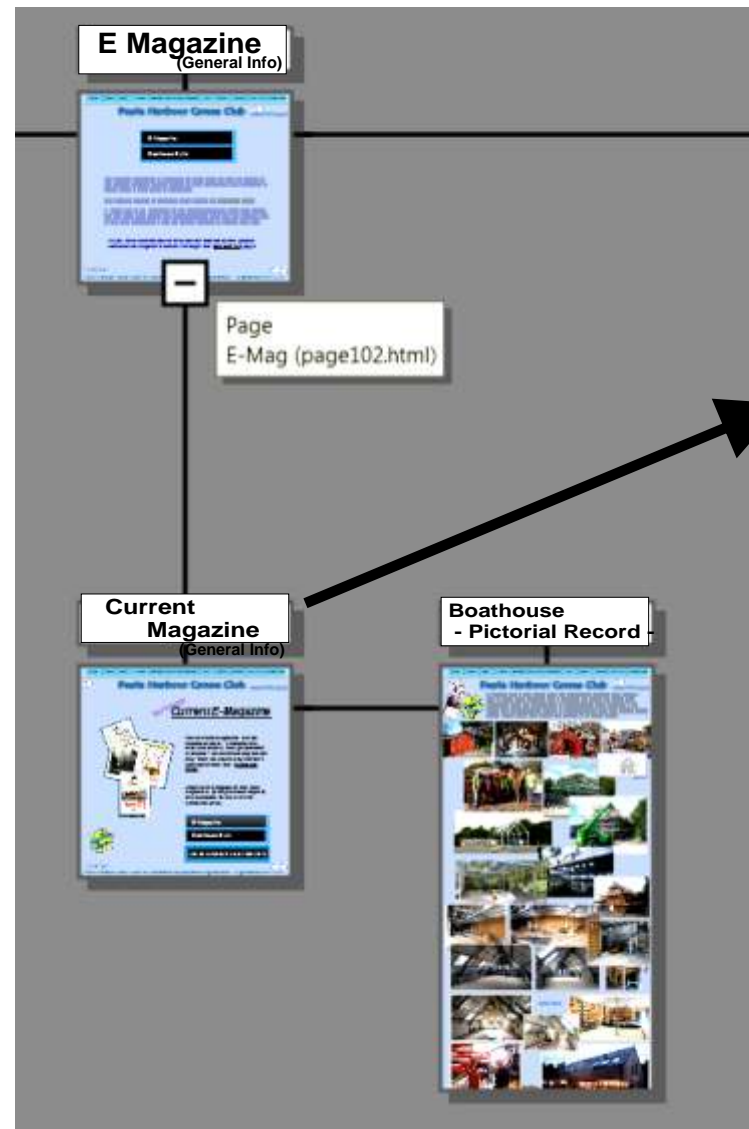




E-MAG > *E-Magazine / Boathouse News (Construction)*

The 'Forthcoming Events' section is linked to from the 'Activities' Page.

Older editions of the magazine are available within the members area's archived magazines section.



The 3-month events listing is linked to on the overview 4 mth period calendar page

[illegible]

Activities >

Activities + Calendar

Sea Kayaking

Juniors

Open Canoe

Paddleability

Kayak Polo

White Water

Surf

Slalom

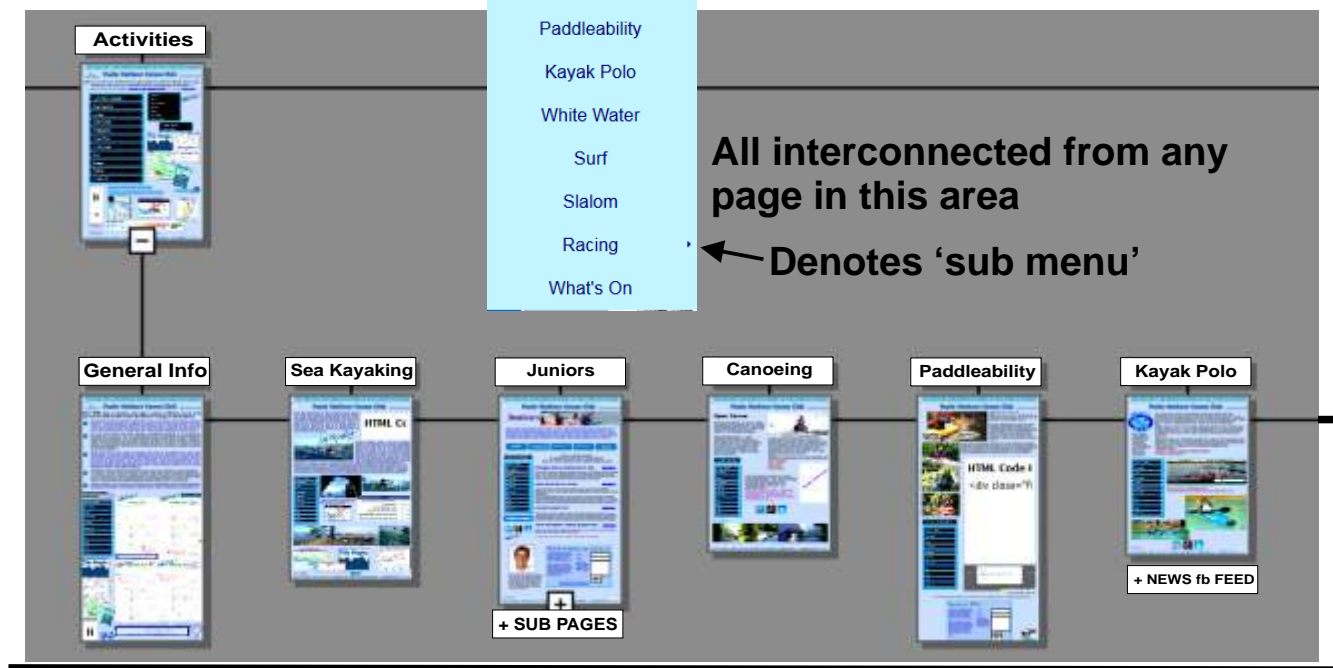
Racing

What's On

All activities have menu panels that link to main 'activities headings' with all sub-pages back-linking to the main menus

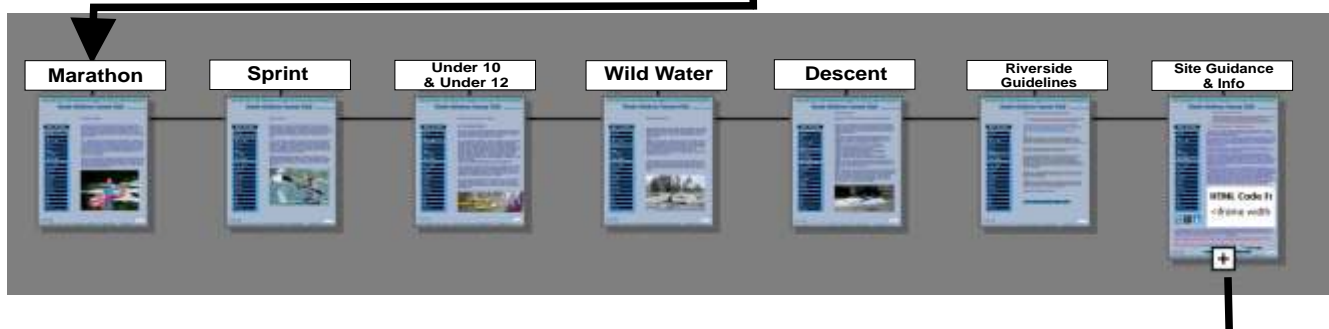
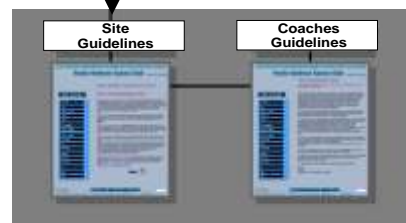
All interconnected from any page in this area

← Denotes 'sub menu'



All interconnected from any page in this area

Direct link from 'Riverside' to 'Racing and subsections & return





Activities >
Juniors >

Activities + Calendar

Sea Kayaking

Juniors

Open Canoe

Paddleability

Kayak Polo

White Water

Surf

Slalom

Racing

What's On

'Juniors have an additional link - But all activities have menu panels that link to main 'activities headings' with all sub-pages back-linking to the main menus



To draw attention to the club's provision for 'Juniors' there is also a direct link on the home page of the website

Juniors



Paddlesport



Kayak Polo



Racing Juniors



General Juniors



pages back-linking to the main menus

Activities > “What’s On”



The ‘What’s On’ website page has a variety of data & assumes visitors have a need for information as to the trips and the conditions they may encounter if they attend

Activities + Calendar

Sea Kayaking

Juniors

Open Canoe

Paddleability

Kayak Polo

White Water

Surf

Slalom

Racing

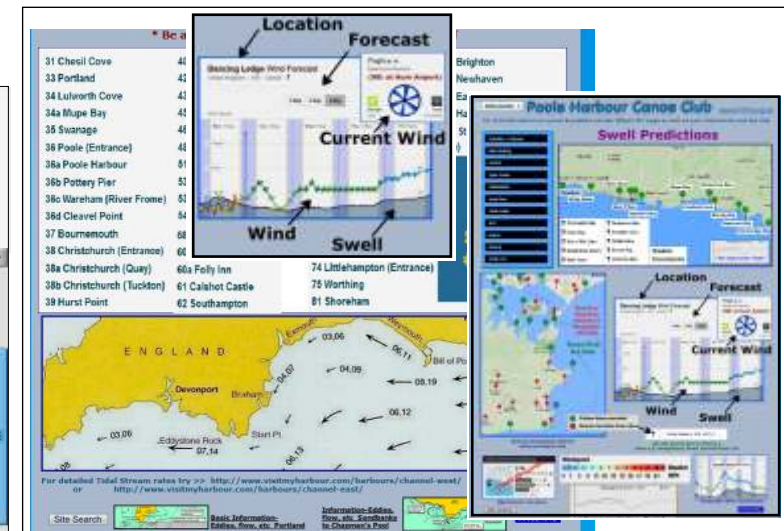
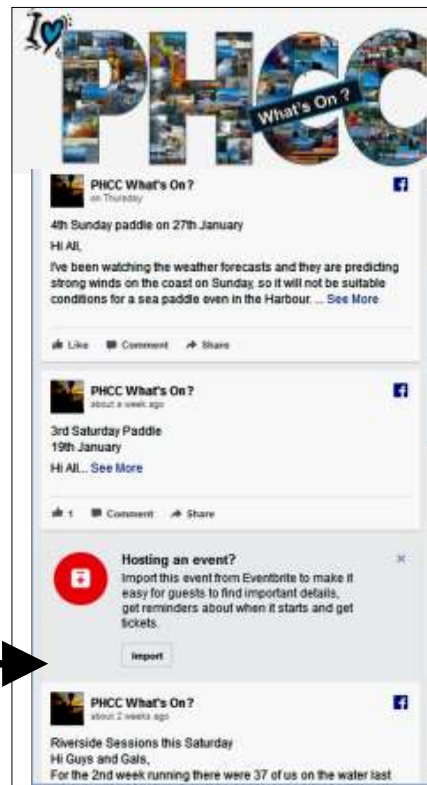
What's On

‘What’s On’ is a method of allowing all coaches (who are effectively ‘admins’) to post details of their trips or events - that are circulated by email to members. This was added in response to those members who claim they have not had email advice regarding trips. It is also a way of putting onto one page a number of facilities that would be useful for trip planning. [The active kernel of around 120 members generally see these as the stats show numbers seeing the post]

‘What’s On?’

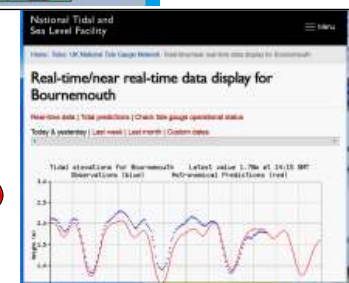


Swell Heights



Direct links to show:

- > Surf conditions
- > Surge levels ‘live’
- > Swell Heights along the coast inc Period/Height/Temp (5 day)
- > 4 day weather f’cast - Poole



Direct links to show:

- > Sunrise/Sunset (4 day)
- > Portland Wind ‘live’
- > Poole Bay/Harbour ‘live’
- > Moon phase - current
- > 4 day weather f’cast - Poole

Bill R, Steve H, Cheryl W, Alan T generally post their trips. Allen W and Peter H also add material - otherwise Bill R copies any email that doesn’t appear and adds it.





RIVERSIDE > *Riverside Location Guides/Maps - Contact names - Discipline links - Risk Assessments & Session forms*

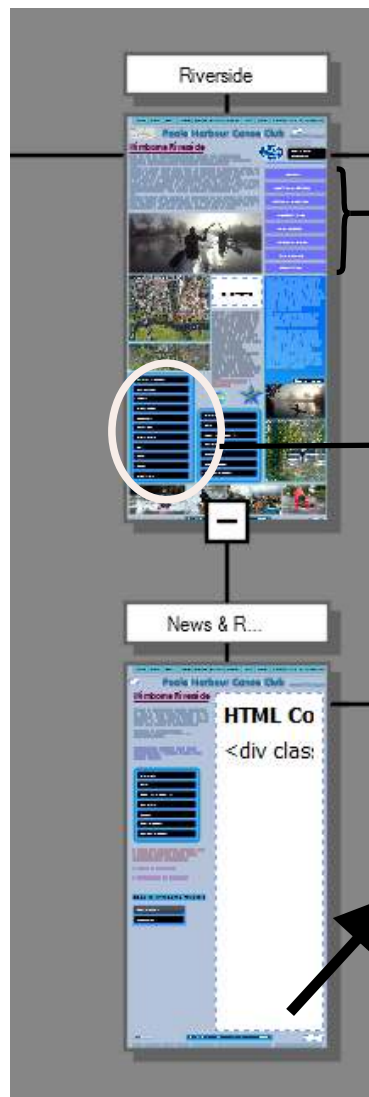




RIVERSIDE

> *Riverside Location Guides/Maps - Contact names - Discipline links - Risk Assessments*

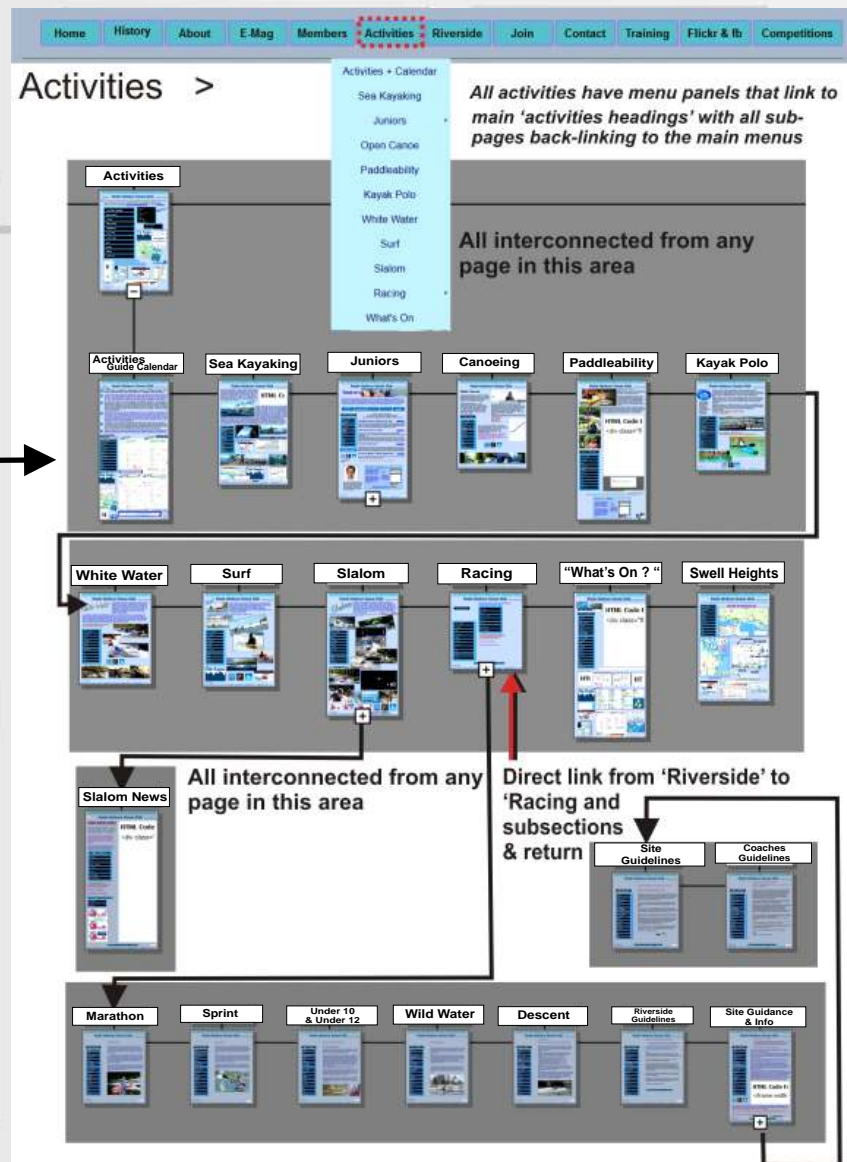
& Session forms



Uses the same menu for activities with the same potential retrace links using 'tabs'

Riverside Results - News clips - Training & specific Riverside communications

Time Trials



Join >



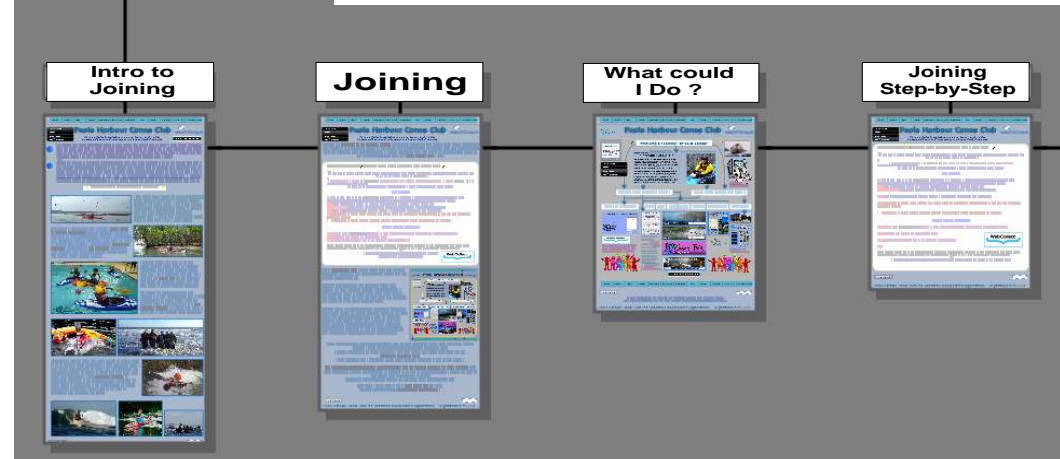
Perhaps you're thinking of joining Poole Harbour Canoe Club. PHCC is probably the largest and maybe the friendliest Kayak and Canoe club on the South Coast of the UK - Check out why this may be the club for you. Use this 'Menu' page to explore the 'Join' section



The 'Join' page is intended to answer questions that a prospective member might have. It also provides easy links for members at the time of their own renewals or events checking - The links are there, should they not have bookmarked them on their browsers.



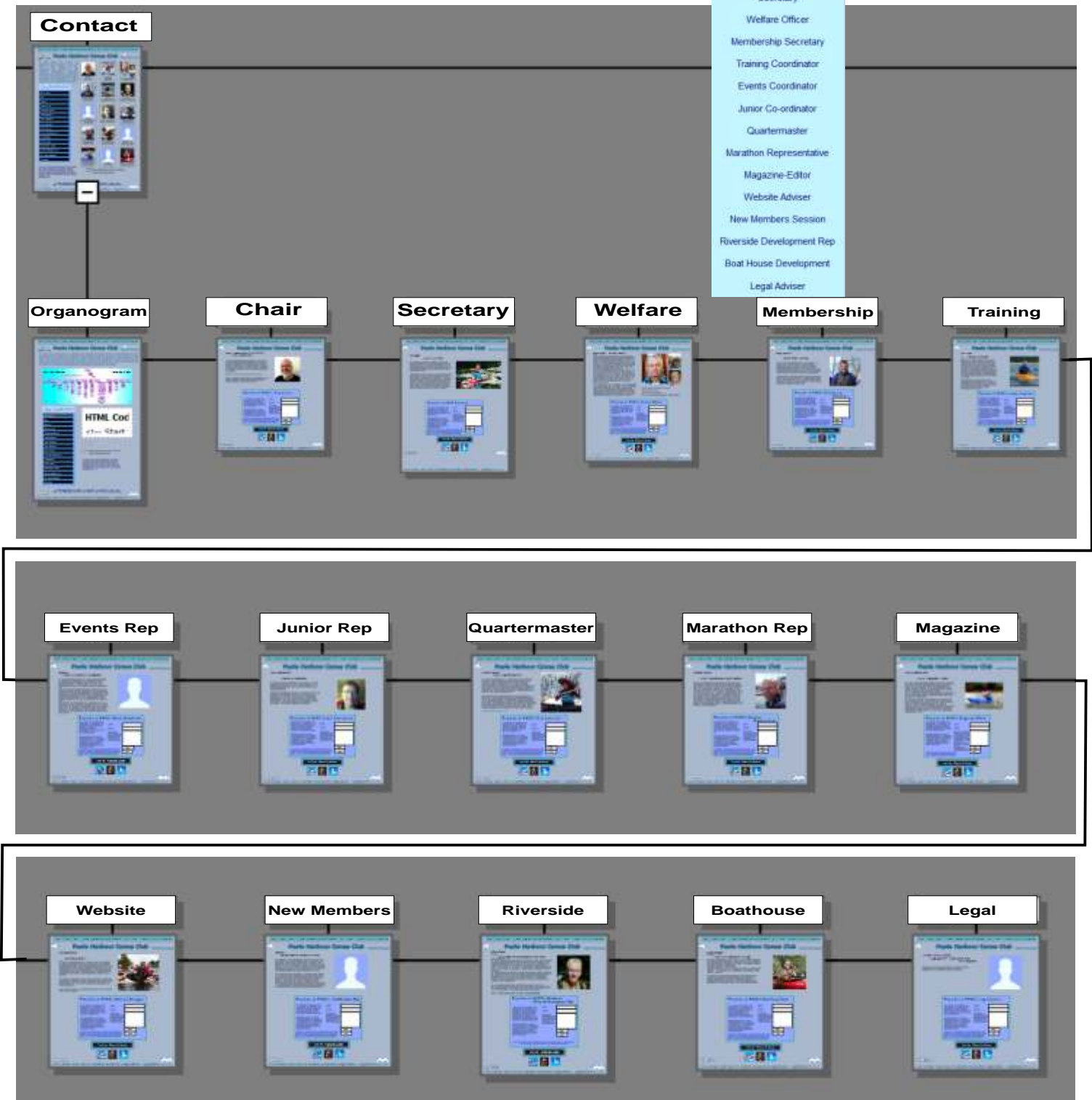
Intro to PHCC
Joining
What Could I Do?
Step-by-Step



Easy Page Finder
& Search Aid



Contact Us >



*'Contact Us' is the simplest way of emailing role-holders for outsiders
All individual pages have return link tabs and the main row of tabs at
the top of the page - making it difficult to get lost within the site.*

*Each Individual's page has a webmail form
directed to the role holder - and in the event of
any difficulties each instruction panel has a direct
email address for 'enquiries' to which the visitor is
directed. This email goes straight to the Secretary*

Training >

'PHCC Training' is a direct feed to a facebook 'PAGE' that allows the training courses to be directly posted to the website without the need for more than a 'facebook entry' The page is viewable by those who do not have facebook accounts as it is a a page feed (not a group) Steve Hills is an admin but any postings can be directed to the 'Timeline' by any 'admin'

There are no 'sub-pages'

Links to "Tides& & the "Whats On?" feed to the website are also provided

The screenshot shows the Poole Harbour Canoe Club website. The top navigation bar includes links to Home, History, About, E-Mag, Members, Activities, Riverside, Join, Contact, **Training**, Flickr & fb, and Competitions. The main heading is "Poole Harbour Canoe Club" with a "Select Language" dropdown and the website URL "www.PHCC.org.uk".

The "Training Courses" section is highlighted. It contains the following text:

PHCC Paddlesport Training
The club offers British Canoeing (BCU) accredited courses for the benefit of members and not as a commercial course provider.

We can offer BCU One and Two Star awards and Three-Star in Sea Inland Open boat

'K boat' training (informal) is available at the Wimborne Riverside site by arrangement with the Riverside Team

All courses are provided by our strong in-house team of experienced coaches with a good selection of equipment to support the courses.

A selection of courses are offered at the beginning of the paddling season in the spring - and after that we provide courses on demand given that suitable numbers have applied.

If you have a particular training need it would be worth contacting the Training Coordinator as courses could be arranged if enough interest was shown.

Any questions please contact the **Training Coordinator**
(Please follow this link to the [WebCollect log-in](#))

[Southsea River Enquiry \(Lake Pier\)](#)

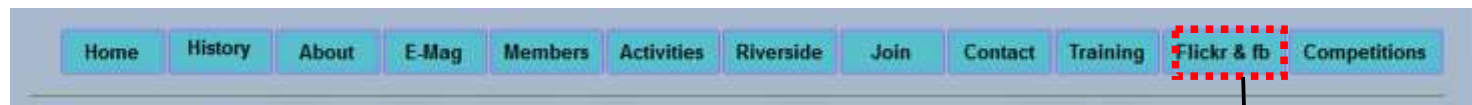
Below the text are links to "Tide Graphs", "WebCollect", and "What's On ?". There is also a "Site Search" box.

On the right side, there is a Facebook page feed for "PHCC Training Courses". It shows a post from "about a month ago" for a "2 day Aquatic First Aid Course" on "12th/13th January 2019". The post has 33 likes and a "See More" link. Below the post are "Like", "Comment", and "Share" buttons.

Below the Facebook feed is an "Events" section with tabs for "List", "Calendar", and "Search". It lists "Upcoming events" for "09-01-2019 20:30 to 21:00":

- Water confidence and rolling Courses (commencing 20:30 and 21:00 hrs)
Where: Ferndown pool
More dates
[Book places >](#)
- GREENLAND Style Rolling Courses (commencing 20:30 and 21:00 hrs)
Where: Ferndown pool

At the bottom, there is a footer that says "Please visit the PHCC Training 'facebook' page" with a Facebook icon and the ID "000326506". Below this is the text "Poole Harbour Canoe Club is a Charitable Incorporated Organisation - Registration # 1152531".



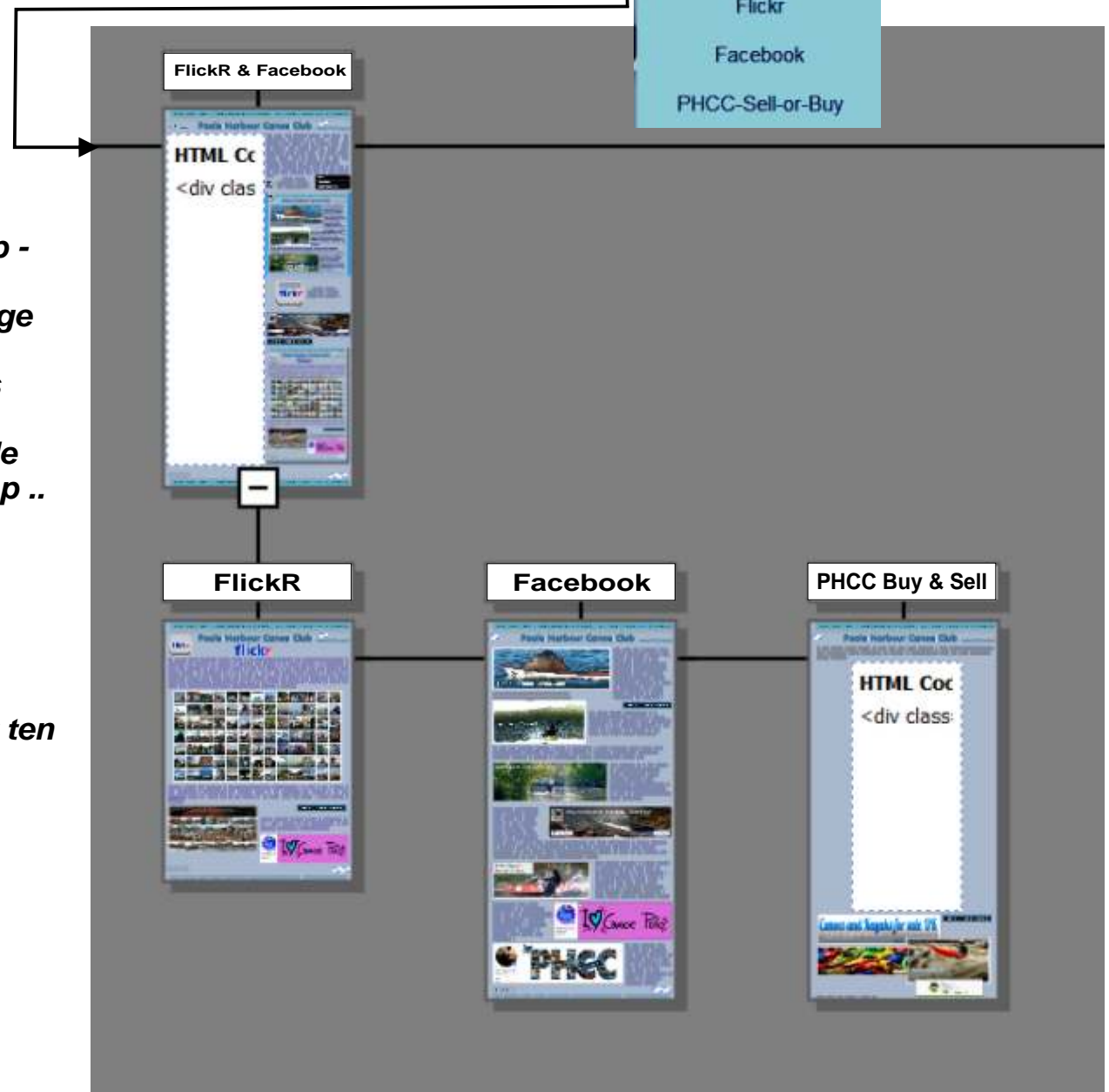
FlickR & Facebook >

These two pages show the different facebook group pages that have been set up - and of which some members and visitors may not be aware. There is also a 'Sales' page

Some of these pages are News & Info pages and feed directly onto other pages of the website. (e.g. Slalom News & Info / Riverside News & Info / Polo News & Info / Photo Comp .. and 'What's On" that features trips run as led sessions by the club.

Links to all other parts of the site via the 'Top Menu'

FlickR features images (albums) from about ten years of trips and is a valuable resource and interest section. The albums also feed directly into the website so any new postings appear on a 'facebook page feed' entitled "PHCC on FLICKR"



Competitions >

PHCC - Challenges
Harbour Race
Kayak Polo - Competitions
Monthly Photo Competition
Annual Photo Contest
Lottery & Ideas

Competitions



**Link Direct
From Home Page**

As a part of the 'Activities' section the Kayak Polo page contains a menu that link directly back to that section

The 'Polo' and all other pages have a menu linking back to the Competitions section of the website but each page also has the generic 'Top Menu'

Challenges



PHCC Challenges

Harbour Race



PHCC Harbour Race

Kayak Polo



PHCC Kayak Polo

Photo Competition



PHCC Monthly Photo Competition

Annual Photo Competition



PHCC Annual Photo Competition

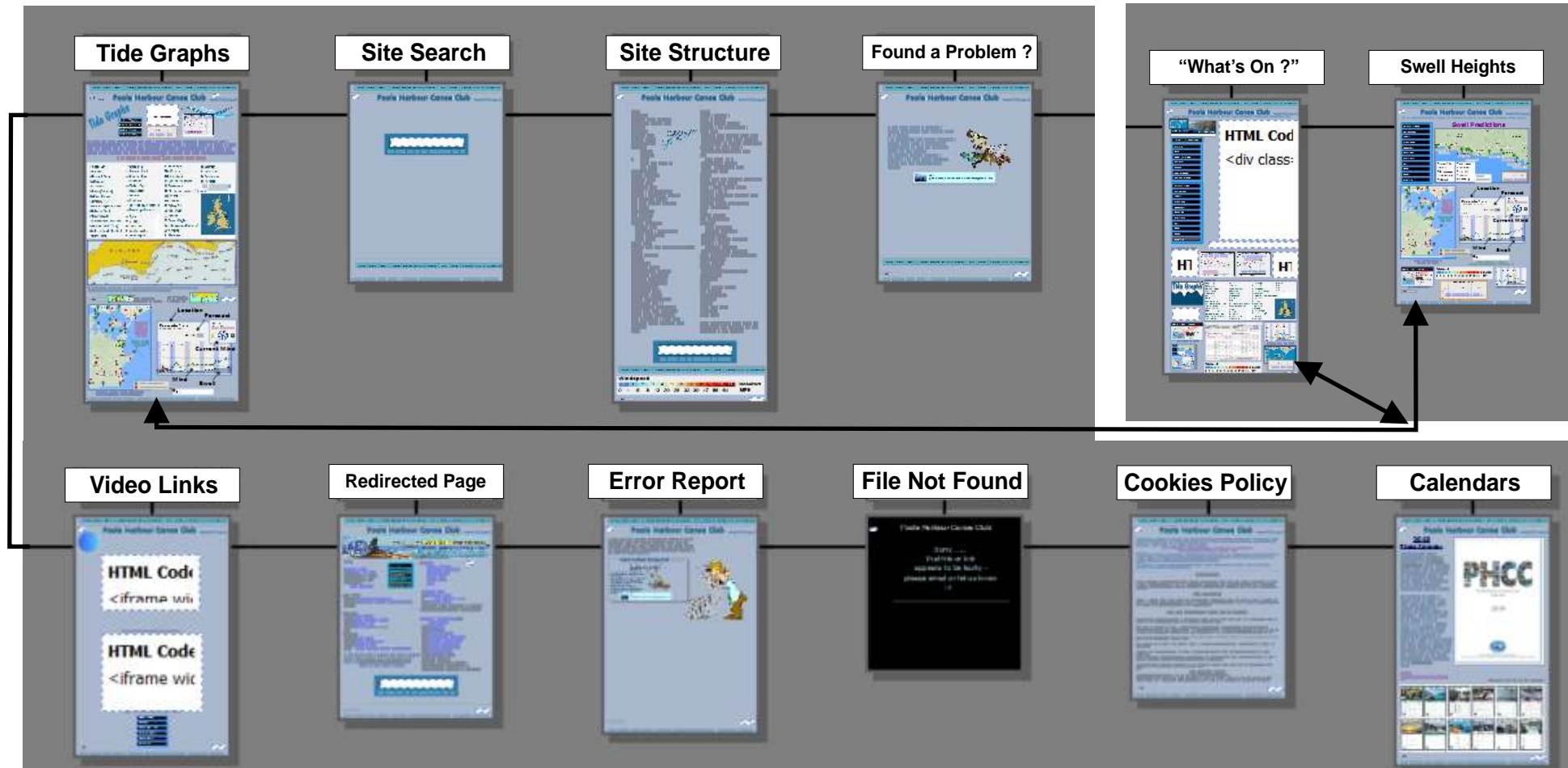
Lottery & General Ideas



Call for Ideas - eg '100 Club'

The 'Challenges Page', The Harbour Race, Photo Competition, Annual Photo Competition (Videos of all entries since 2015) and 'Ideas requests' all add an additional social element to the club's activities

Extra Pages >



A number of Pages such as 'Tide Graphs', 'Wind & Swell Heights', 'Site Search', 'What's On', 'Site Structure', 'Report an Error', 'Cookie Policy', 'Calendar Project', and 'Video Links' can be accessed from many parts of the site with all having the Generic Blue Tabs Menu as well as their 'Sub-Section' Menus.

